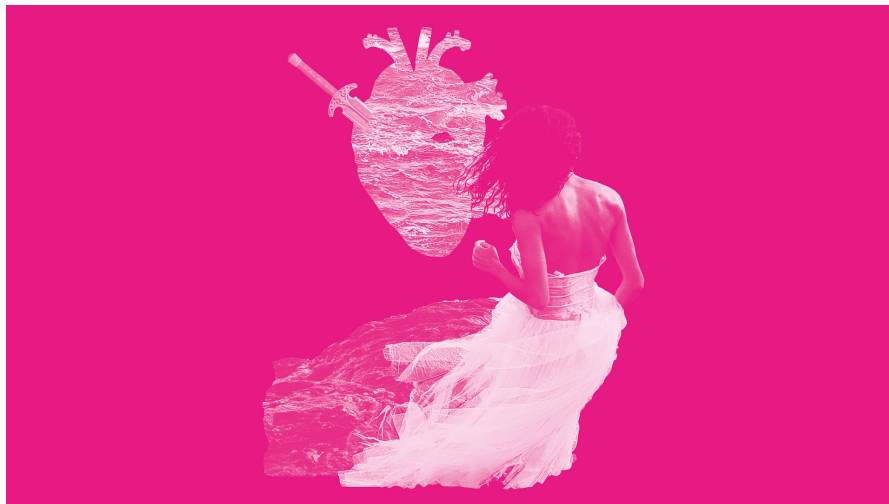


DANCE / FACTORÍA ECHEGARAY



Teatro Echegaray

estreno

friday **01** november 19.00 h  
saturday **02** november 19.00 h and 21.00 h  
tuesday **05** november 20.00 h  
wednesday **06** november 20.00 h  
thursday **07** november 20.00 h  
friday **08** november 20.00 h  
saturday **09** november 19.00 h and 21.00 h  
tuesday **29** october 20.00 h  
wednesday **30** october 20.00 h  
thursday **31** october 20.00 h

Ticket sale 11/10/2018  
Prices A **42€**B **31€**C **23€**D **14€**  
Usual discounts do not apply

## NO AMANECE EN GÉNOVA

[*Mirror's & Mirages*]

Santi Balmes voice  
Julian Saldarriaga guitar  
Jordi Roig guitar  
Ricky Falkner bass  
Dani Ferrer keyboard  
Oriol Bonet drums  
Guillem Alba actor

2.30 h (w/out intermission)  
[loveoflesbianband.com](http://loveoflesbianband.com)

After repeated requests from the anxious audience of *Love of Lesbian*, the show *E&E* returns to theatres. *Espejos y espejismos (Mirror's & Mirages)* is not a play nor a musical. It could be defined as a dramatised concert based on the dreamlike song repertoire of *Love of Lesbian*. Music as the reflection of our reality? Or music to create mirages in which to find shelter? A duality often found in one same tune and one same verse.

The new updated staging of *E&E* will include some pieces from *El poeta Halley* (2016), but will conserve its magical and minimal essence. Guillem Albà has conceived staging where Chinese shadows, puppets and other theatrical elements will take centre stage to reproduce the proper emotional *atrezzo* for each situation.